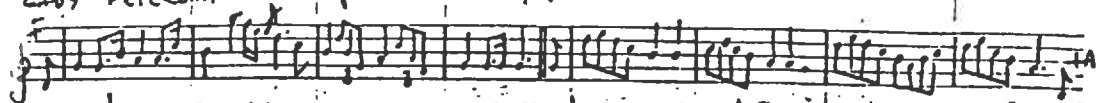


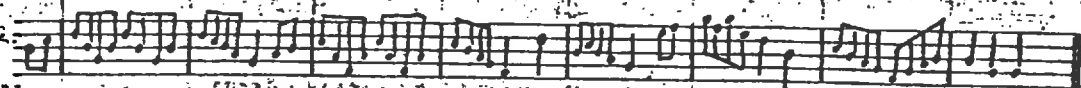
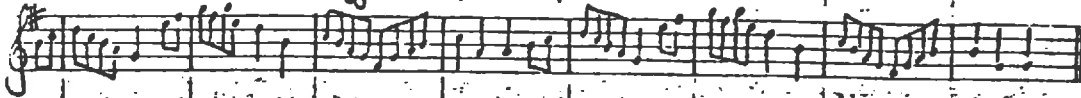
See Section 5: Stave and Ribbon Dances  
for Notations

TUNES FOR SOMERSET MORRIS

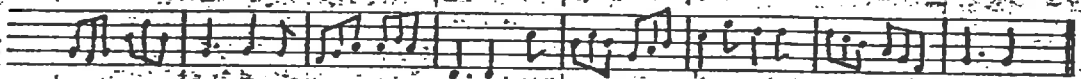
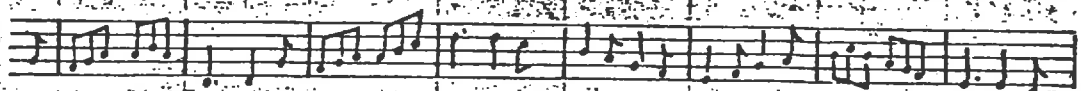
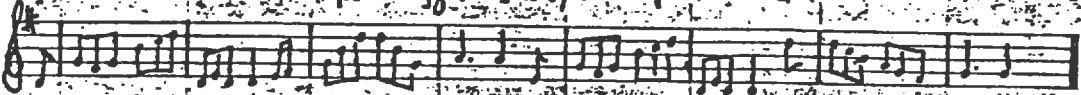
LADY PETERSHAM'S REEL. from 24 Dances as performed at Bath 1764.



CUCKOO'S NEST C. H. J. Higgins 13.9.07 at Shepton Mallet



BONNETS SO BLUE C. H. J. Higgins 2.10.07 at Shepton Mallet



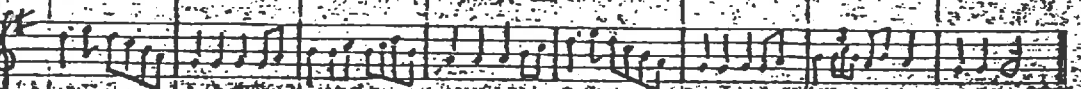
GREENSLEAVES ditto 13.9.07



NORTON HORNPIPE ditto



HORNPIPE ditto



BRICKS AND MORTAR C# 4 Cane at Nettlebridge 14.9.07

Suzuki (cut)

Handwritten musical notation for 'BRICKS AND MORTAR'. It consists of two staves of music in treble clef with a key signature of one sharp (F#). The melody is written on the upper staff, and the accompaniment is on the lower staff. The music features a mix of eighth and sixteenth notes.

GREENSLAVES ditto

Handwritten musical notation for 'GREENSLAVES ditto'. It consists of two staves of music in treble clef with a key signature of one sharp (F#). The melody is written on the upper staff, and the accompaniment is on the lower staff. The music features a mix of eighth and sixteenth notes.

FOUR HAND REEL ditto

Handwritten musical notation for 'FOUR HAND REEL ditto'. It consists of two staves of music in treble clef with a key signature of one sharp (F#). The melody is written on the upper staff, and the accompaniment is on the lower staff. The music features a mix of eighth and sixteenth notes.

STEP DANCE ditto

Handwritten musical notation for 'STEP DANCE ditto'. It consists of two staves of music in treble clef with a key signature of one sharp (F#). The melody is written on the upper staff, and the accompaniment is on the lower staff. The music features a mix of eighth and sixteenth notes.

JIG ditto

Handwritten musical notation for 'JIG ditto'. It consists of two staves of music in treble clef with a key signature of one sharp (F#). The melody is written on the upper staff, and the accompaniment is on the lower staff. The music features a mix of eighth and sixteenth notes.

FLOWERS OF EDINBURGH C# 4 Price at Nettlebridge 29.12.07

Handwritten musical notation for 'FLOWERS OF EDINBURGH'. It consists of two staves of music in treble clef with a key signature of one sharp (F#). The melody is written on the upper staff, and the accompaniment is on the lower staff. The music features a mix of eighth and sixteenth notes.